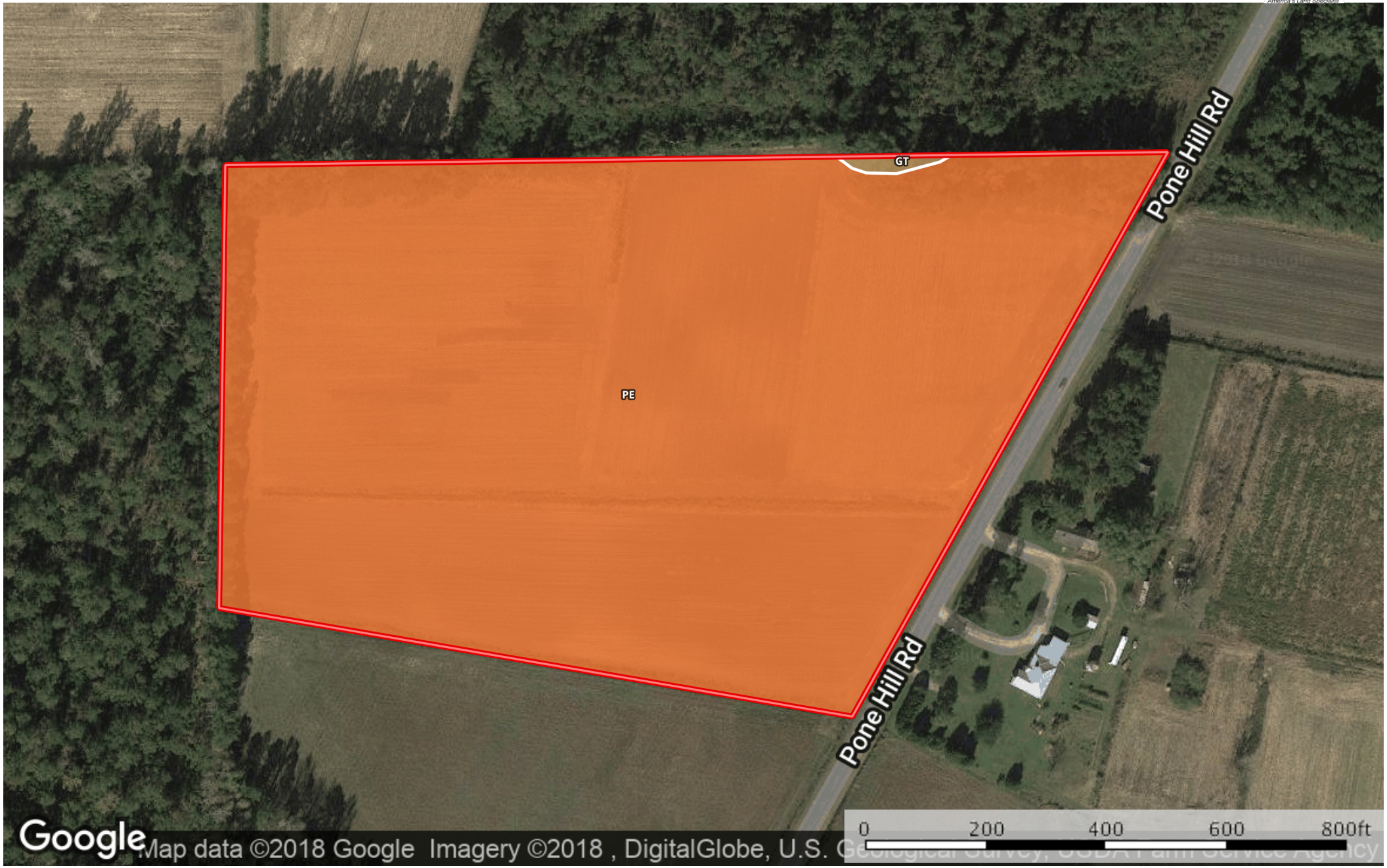



18 ac Garrell Columbus JP
Columbus County, North Carolina, 18 AC +/-



Google

 Boundary

|  Boundary 17.6 ac

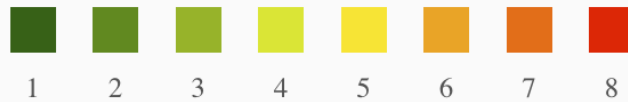
| SOIL CODE | SOIL DESCRIPTION | ACRES | % | CAP |
|-----------|-------------------------|-------|-------|-----|
| Gt | Grifton fine sandy loam | 0.1 | 0.34 | 3w |
| Pe | Pender fine sandy loam | 17.5 | 99.66 | 2w |
| TOTALS | | 17.6 | 100% | 2.0 |

Capability Legend

Increased Limitations and Hazards

Decreased Adaptability and Freedom of Choice Users

Land, Capability
Class(non-irrigated)



| | | | | | | | | |
|--------------|---|---|---|---|---|---|---|---|
| 'Wild Life' | • | • | • | • | • | • | • | • |
| Forestry | • | • | • | • | • | • | • | |
| Limited | • | • | • | • | • | • | • | |
| Moderate | • | • | • | • | • | • | | |
| Intense | • | • | • | • | • | | | |
| Limited | • | • | • | • | | | | |
| Moderate | • | • | • | | | | | |
| Intense | • | • | | | | | | |
| Very Intense | • | | | | | | | |

Grazing Cultivation

(c) climatic limitations (e) susceptibility to erosion

(s) soil limitations within the rooting zone (w) excess of water