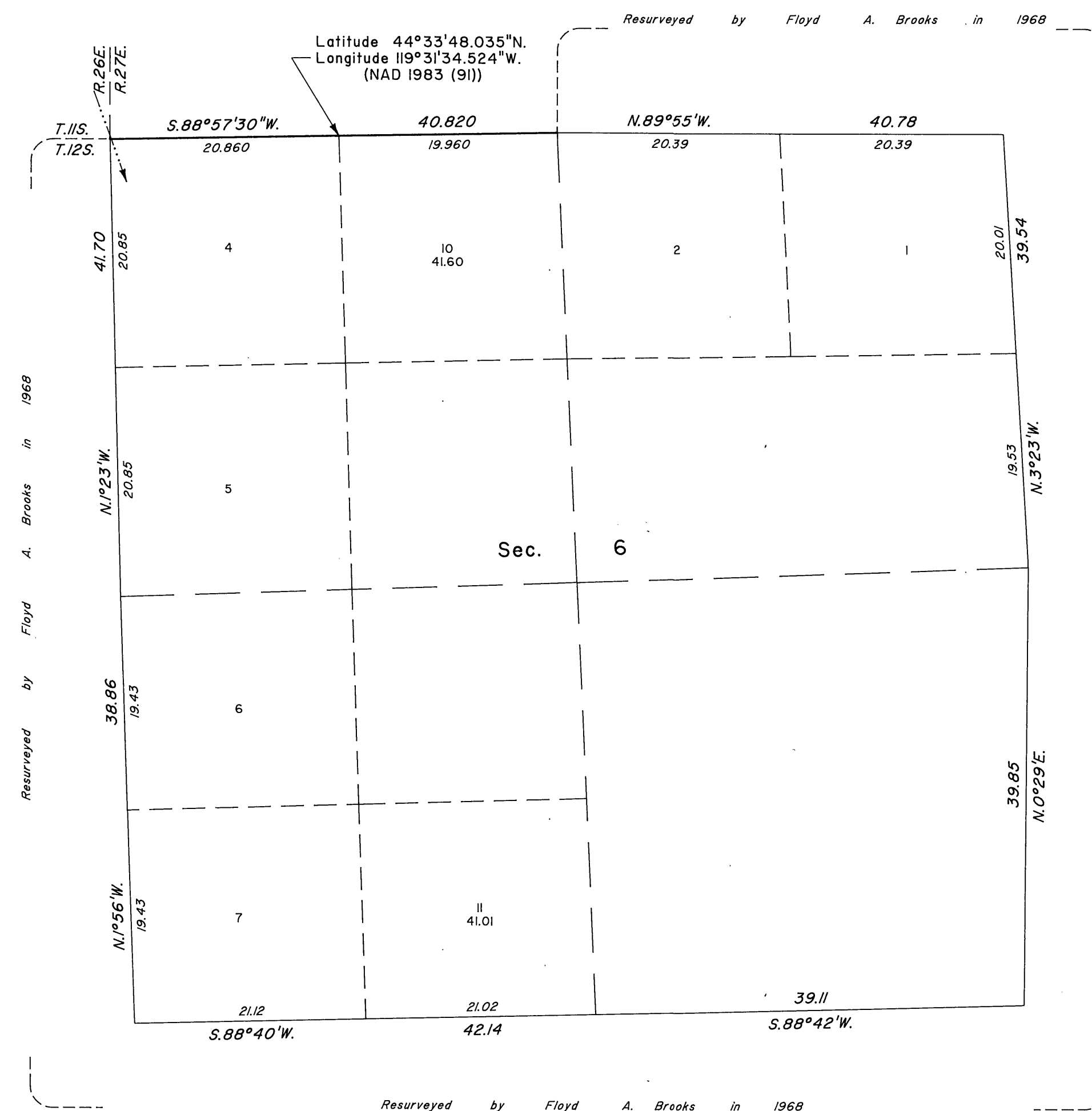


TOWNSHIP 12 SOUTH, RANGE 27 EAST, OF THE WILLAMETTE MERIDIAN, OREGON

CORRECTIVE DEPENDENT RESURVEY

Sec. 36

Sec. 31



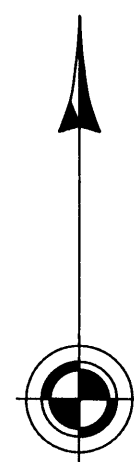
A history of surveys is contained in the field notes.

This plat represents a corrective dependent resurvey of a portion of the north boundary, T. 12 S., R. 27 E., Willamette Meridian, Oregon.

Except as shown hereon, the lottings and areas are as shown on the plat approved September 29, 1884, and the plat accepted October 19, 1970.

The survey was executed by Philip G. Griffin, Cadastral Surveyor, beginning October 25, 1994, and completed October 12, 1995, pursuant to Special Instructions dated October 13, 1994, under Group Number 1747, Oregon.

Timber in this area consists of juniper, fir, larch, and pine.



Mean magnetic declination 18° East

Sec. 1

UNITED STATES DEPARTMENT OF THE INTERIOR
BUREAU OF LAND MANAGEMENT

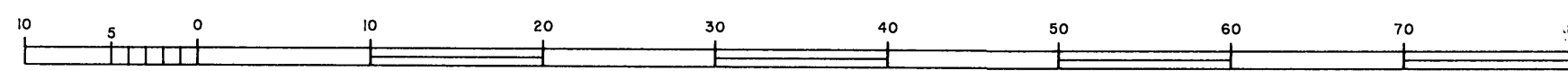
Portland, Oregon December 4, 1995

This plat is strictly conformable to the approved field notes, and the survey, having been correctly executed in accordance with the requirements of law and the regulations of this Bureau, is hereby accepted.

For the Director

Wayne M. Gardner

Chief Cadastral Surveyor of Oregon



Scale in Chains

RECEIVED AND FILED

APR 3 1996

OFFICE OF COUNTY SURVEYOR
[Signature]

R.F.B.