

1.96 ACRES

BIG LAKE COMMERCIAL LOT

Lot 1 & 2 W. Big Lake Rd.

Birch Park

Big Lake, AK 99652

<https://www.mossyoakproperties.com/land/38530>

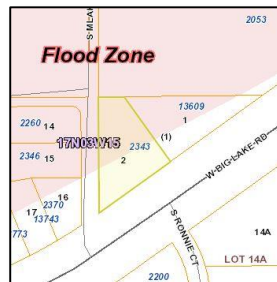
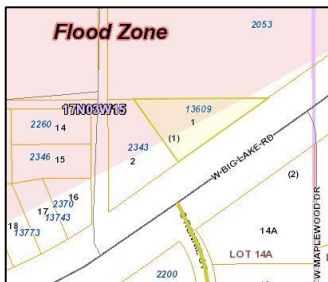
\$56,400

AKMLS #: 18-7987



Commercial, Industrial or Residential lots with frontage on, highly trafficked, Big Lake Rd. Lots are mostly level and no wetlands are present. Both are close to electric, phone, and natural gas service. New and established businesses in the area and close to residential homes. The tracts are being sold together and are priced to sell at \$3,400 below the, total, tax appraised value. Lots are partially located in a flood plain. Call today for more information about this property.

Directions: From the Parks Hwy outside of Wasilla, turn left onto Big Lake Rd and drive about 2.4 miles. Property will be on the right - For Sale sign is posted.



Lot 1
 13609 W. Big Lake Rd.
 Big Lake, AK 99652
 2017 Tax Appraised
 Value: \$28,300

Lot 2
 2343 S. Birch Lake Dr.
 Big Lake, AK 99652
 2017 Tax Appraised
 Value: \$31,500

Land Type: Commercial, Industrial, Residential

Finance Terms: Cash, Conventional

Note: Prop. Lines shown in all pictures are a close estimate.

Contact me:

Brad Baker, Land Professional
bbaker@mossyoakproperties.com
www.MyAlaskaProperties.com

(907) 301-3101

Mossy Oak Properties of Alaska
 2901 E. Bogard Rd. #102
 Wasilla, AK 99654

