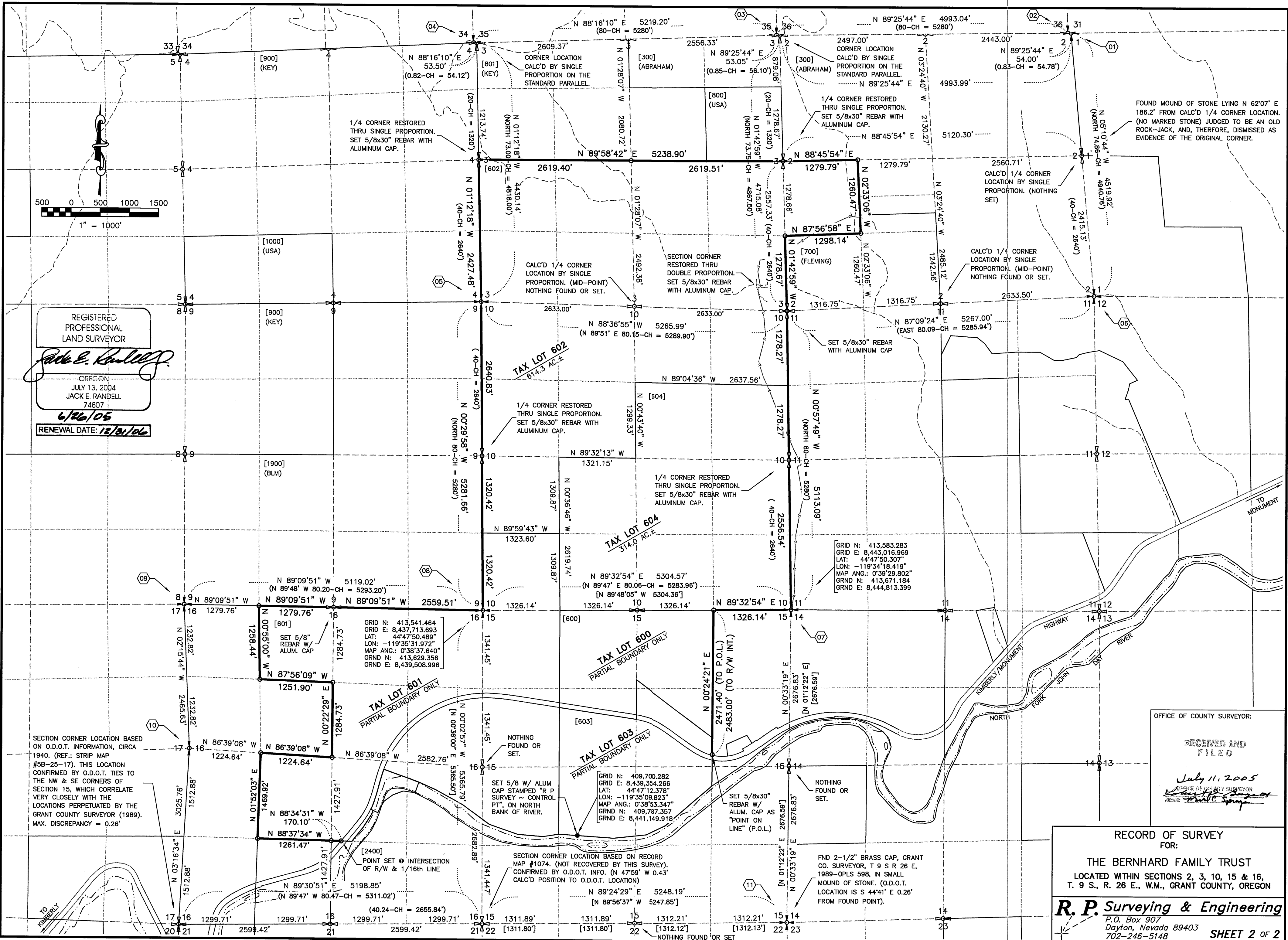


REGISTERED
PROFESSIONAL
LAND SURVEYOR

Jack E. Randell

OREGON
JULY 13, 2004
JACK E. RANDELL
74807

6/26/05
RENEWAL DATE: 12/31/06



SECTION CORNER LOCATION BASED ON O.D.O.T. INFORMATION, CIRCA 1940. (REF.: STRIP MAP #5B-25-17). THIS LOCATION CONFIRMED BY O.D.O.T. TIES TO THE NW & SE CORNERS OF SECTION 15, WHICH CORRELATE VERY CLOSELY WITH THE LOCATIONS PERPETUATED BY THE GRANT COUNTY SURVEYOR (1989). MAX. DISCREPANCY = 0.26'

[2400] POINT SET @ INTERSECTION OF R/W & 1/16th LINE

SECTION CORNER LOCATION BASED ON RECORD MAP #1074. (NOT RECOVERED BY THIS SURVEY). CONFIRMED BY O.D.O.T. INFO. (N 47°59' W 0.43' CALC'D POSITION TO O.D.O.T. LOCATION)

FND 2-1/2" BRASS CAP, GRANT CO. SURVEYOR, T 9 S R 26 E, 1989-OPLS 598, IN SMALL MOUND OF STONE. (O.D.O.T. LOCATION IS S 44°41' E 0.26' FROM FOUND POINT).

FOUND MOUND OF STONE LYING N 62°07' E 186.2' FROM CALC'D 1/4 CORNER LOCATION. (NO MARKED STONE) JUDGED TO BE AN OLD ROCK-JACK, AND, THEREFORE, DISMISSED AS EVIDENCE OF THE ORIGINAL CORNER.

OFFICE OF COUNTY SURVEYOR:

RECEIVED AND FILED

July 11, 2005

OFFICE OF COUNTY SURVEYOR

Michael Sprague

RECORD OF SURVEY FOR:

THE BERNHARD FAMILY TRUST

LOCATED WITHIN SECTIONS 2, 3, 10, 15 & 16, T. 9 S., R. 26 E., W.M., GRANT COUNTY, OREGON

R. P. Surveying & Engineering

P.O. Box 907
Dayton, Nevada 89403
702-246-5148

SHEET 2 OF 2