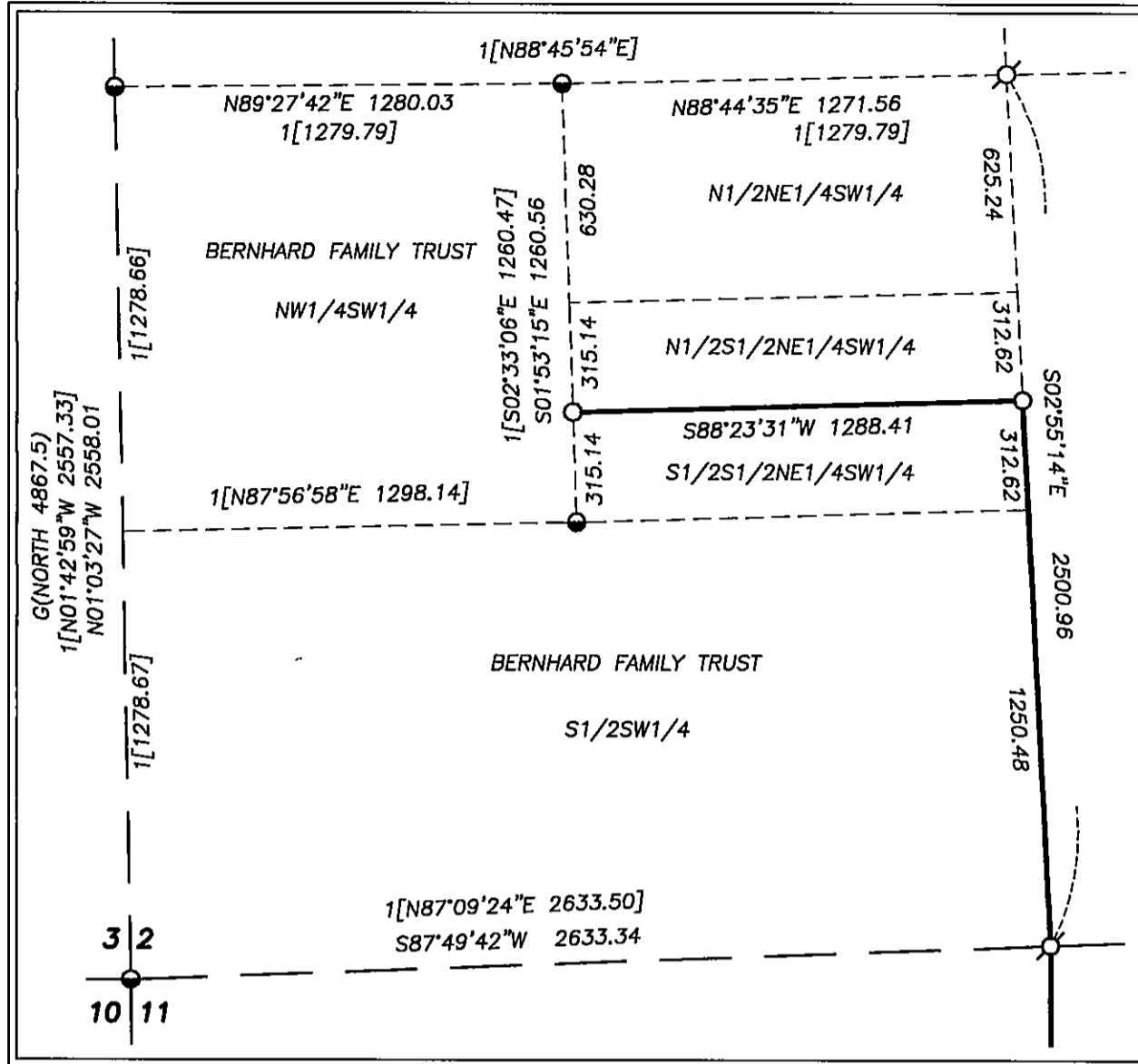


DETAIL
SCALE: 1"=500'



LEGEND

- FOUND 1/2" GALV. IRON PIPE WITH ATTACHED GRANT COUNTY SURVEYOR BRASS CAP
- ⊙ FOUND BLM MONUMENT AS INDICATED
- ⊙ FOUND 2 1/2" ALUMINUM PIPE WITH ATTACHED 3" CAP MARKED FOR SEC. COR. - 2006
- FOUND 5/8" IRON PIN WITH ATTACHED ALUMINUM CAP FROM SURVEY NO. 1726
- ⊙ SET 5/8"x30" IRON PIN WITH ATTACHED ALUMINUM CAP MARKED "BENCHMARK LAND SURVEYING", AND WITH APPROPRIATE CORNER DESIGNATIONS
- SET 5/8"x30" IRON PIN WITH ATTACHED YELLOW PLASTIC CAP MARKED "BENCHMARK SURVEYING"
- G() G.L.O. RECORD BEARING AND DISTANCE
- [] RECORD BEARING AND DISTANCE FROM SURVEY NO. 1783
- 1[] RECORD BEARING AND DISTANCE FROM SURVEY NO. 1726
- FOUND MONUMENT FROM RECORDED SURVEY NO.
- x-x FENCE LINE



NARRATIVE

THIS SURVEY WAS PERFORMED AT THE REQUEST OF AL BERNHARD ACTING ON BEHALF OF THE BERNHARD FAMILY TRUST. THE PURPOSE OF THIS SURVEY WAS TO SURVEY AND MONUMENT THE CORNERS OF THE PROPERTY DESCRIBED IN DEED INSTRUMENT NO. 20120162, RECORDS OF GRANT COUNTY, OREGON. AT MR. BERNHARD'S REQUEST, WE ALSO POSTED CERTAIN BOUNDARY LINES WITH STEEL POSTS AND FLAGGING.

A SEARCH WAS MADE OF THE AVAILABLE RECORDS PERTAINING TO THIS SURVEY. I MADE FIELD MEASUREMENTS TO LOCATE APPURTENANT MONUMENTS SHOWN ON SURVEY NO'S 1074, 1726, 1783 AND OTHER MONUMENTS SET BY THE BLM AND THE GRANT COUNTY SURVEYOR.

SURVEY NO. 1726 BY JACK RANDELL, WAS PERFORMED IN JULY 2005. DURING HIS SURVEY, MR. RANDELL EITHER FOUND OR REESTABLISHED THE MAJORITY OF THE CONTROLLING CORNERS FOR THIS SURVEY. I LOCATED THE APPURTENANT MONUMENTS FROM SURVEY NO. 1726 AND FOUND MOST CORNERS TO BE WITHIN ACCEPTABLE TOLERANCE. THE EXCEPTION BEING THE COURSES AND DISTANCES TO THE EVIDENCE ACCEPTED BY RANDELL AT CLOSING CORNER BETWEEN SECTIONS 1 AND 2, T.9S., R.26E., AND THE STANDARD CORNER BETWEEN SECTIONS 36 T.8S., R.26E., AND SECTION 31 T.8S., R.27E. MR. RANDELL DID NOT SET MONUMENTS AT THESE POSITIONS.

MY MEASUREMENTS WERE APPROXIMATELY 90 FEET LONGER BETWEEN THE SOUTHEAST CORNER OF SECTION 2 AND THE EXISTING FENCE EXCEPTED BY MR. RANDELL. I CONFERRED WITH HIM AND WE DETERMINED THAT WE HAD BOTH LOCATED THE SAME FENCE CORNERS.

I SEARCHED FOR BUT DID NOT FIND THE ORIGINAL GLO MONUMENTS AT THE STANDARD CORNER OR THE CLOSING CORNER. I FOUND SEVERAL OLD METAL FOREST SERVICE BOUNDARY MARKERS LYING ON THE GROUND NEAR THE FENCES. AT THE ACCEPTED POSITION FOR THE STANDARD CORNER, THERE IS A FENCE RUNNING NORTH AND EAST. 54.0 FEET EASTERLY THE EXISTING FENCE STARTS MAKING A SLOW CURVE TO THE SOUTH. THE REMAINS OF AN OLD FENCE EXTENDS TO THE EAST.

I ACCEPT THE FENCE CORNER THAT WAS USED BY RANDELL AS THE BEST AVAILABLE EVIDENCE OF THE STANDARD CORNER. I ALSO ACCEPT THE FENCE 54.0 TO THE EAST AS THE BEST AVAILABLE EVIDENCE OF THE CLOSING CORNER. IN ORDER TO PRESERVE THE INTEGRITY OF RANDELL'S SURVEY AND TO AVOID SETTING DOUBLE MONUMENTS, I ALSO ACCEPT THE NORTHEAST AND SOUTHEAST CORNERS OF THE NW1/4SW1/4 SECTION 2.

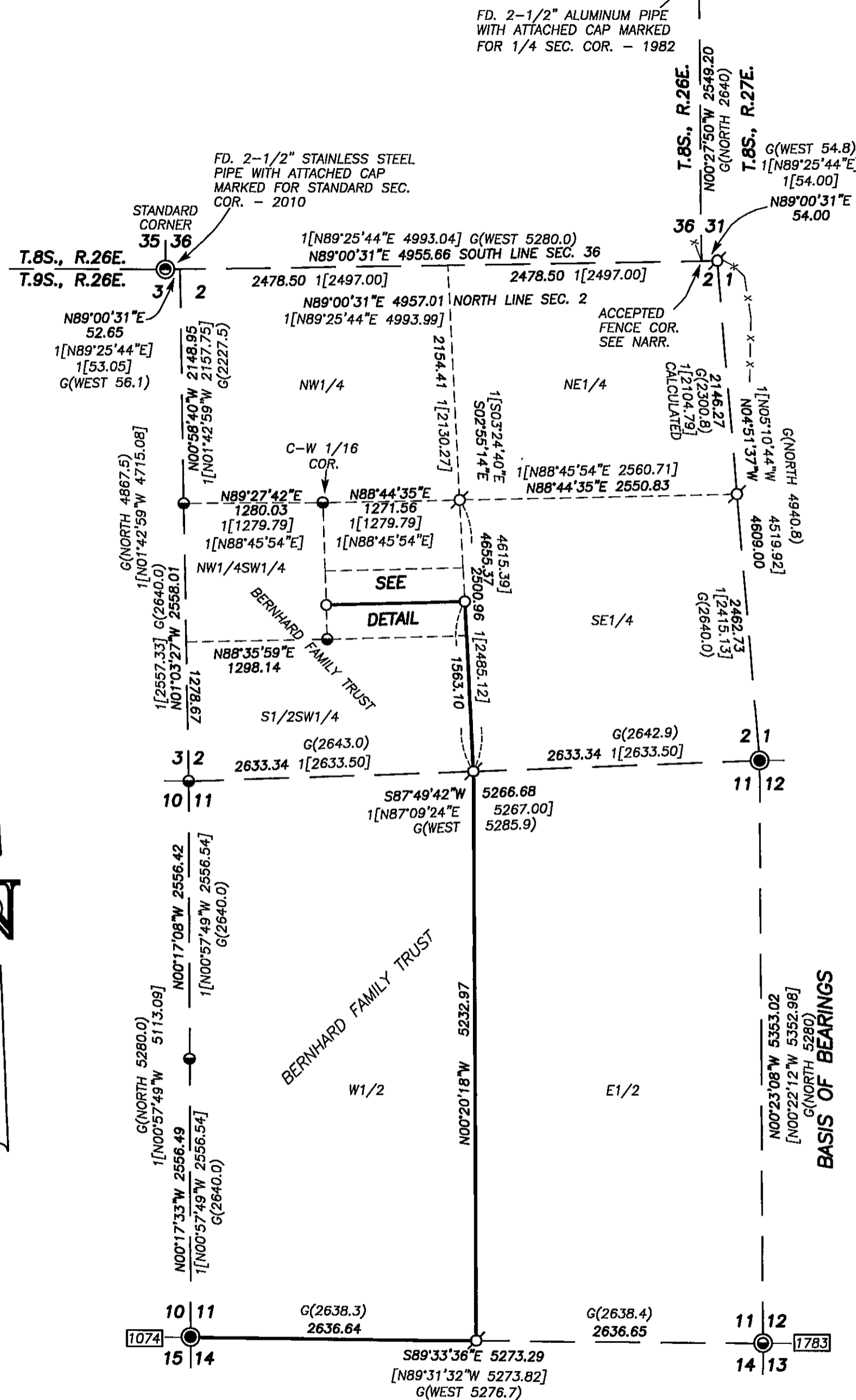
I ALSO SEARCHED FOR, BUT DID NOT FIND THE CLOSING CORNER BETWEEN SECTIONS 2 AND 3, THE E1/4 CORNER AND S1/4 CORNER OF SECTION 2 AND THE S1/4 CORNER OF SECTION 11. I DETERMINE THESE CORNERS TO BE LOST AND CALCULATED THEIR POSITIONS USING SINGLE PROPORTIONS.

I SUBDIVIDED SECTION 2 AS FOLLOWS: THE NORTH-SOUTH CENTERLINE OF SECTION 2 RUNS BETWEEN THE S1/4 CORNER AND THE CALCULATED POSITION OF THE N1/4 CORNER. THE EAST-WEST CENTERLINE OF SECTION 2 RUNS BETWEEN THE E1/4 CORNER AND THE C-W 1/16 CORNER SET BY RANDELL. AFTER ESTABLISHING THE CENTER OF SECTION, I SUBDIVIDED SECTION 2 IN ACCORDANCE WITH THE 2009 BLM MANUAL OF SURVEYING INSTRUCTIONS.

SEE CORNER RESTORATION RECORDS FOR DETAILS ON THE CORNERS SET AND THEIR ACCESSORIES.

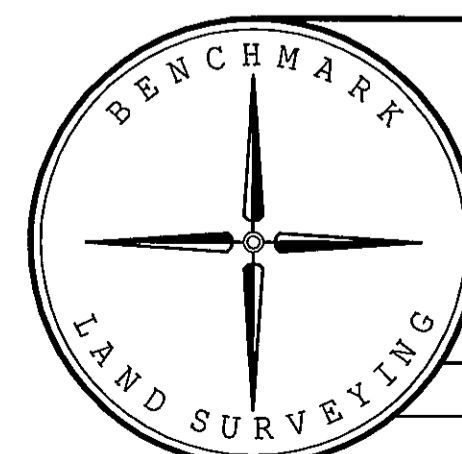
REFERENCES

- RECORD MAP OF SURVEY NO.'S 1047, 1726 & 1783
- DEED RECORD INSTRUMENT NO. 20120162
- GRANT COUNTY CORNER RESTORATION RECORDS
- BLM AND GLO FIELD NOTES



BASIS OF BEARINGS

GEODETIC NORTH
N00°23'08"W FROM A GPS OBSERVATION BETWEEN THE SE AND NE CORNERS SECTION 11, AS SHOWN



BENCHMARK LAND SURVEYING
217 N. CANYON BLVD. JOHN DAY, OREGON
2101 MAIN STREET, STE 223 BAKER CITY, OREGON
541-575-1251 ~ 800-699-0516

MAP OF SURVEY
A DEPENDANT RESURVEY AND SUBDIVISION OF
SECTIONS 2 AND 11, T.9S., R.26E., W.M.,
GRANT COUNTY, OREGON

SURVEYED FOR	BERNHARD FAMILY TRUST	
SURVEYED BY	MCS & JLH	3/29/2012
Scale: 1"=1000'	Drawn by: MCS	

RECEIVED AND FILED
GRANT COUNTY SURVEYOR

APR 5 2012

BY: *Michael C. Springer*

REGISTERED
PROFESSIONAL
LAND SURVEYOR

Michael C. Springer
OREGON
JULY 9, 2002
MICHAEL C. SPRINGER
#70918

EXPIRES: 6/30/2012