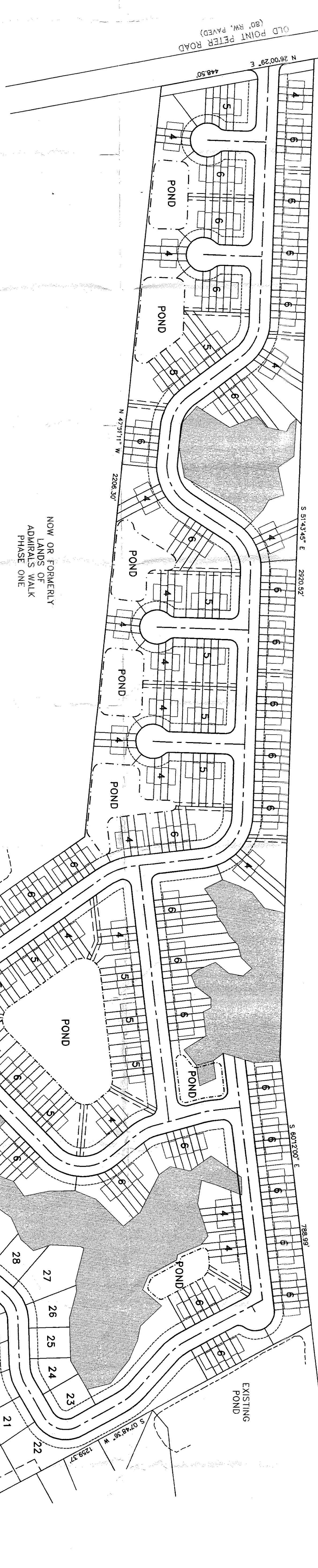


NOW OR FORMERLY
LANDS OF
THE UNITED STATES
OF AMERICA

NOW OR FORMERLY
LANDS OF
THE UNITED STATES
OF AMERICA

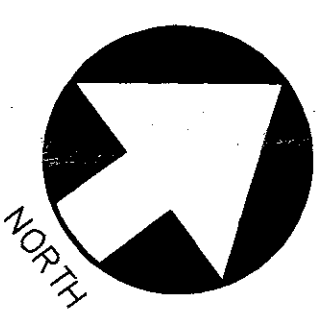


MULTI FAMILY RESIDENTIAL
 4 UNIT BUILDINGS: 20
 5 UNIT BUILDINGS: 13
 6 UNIT BUILDINGS: 36
TOTAL: 80 UNITS

SINGLE FAMILY RESIDENTIAL
 35 SF LOTS
 (MINIMUM LOT WIDTH: 85')
 (MINIMUM LOT SIZE: 10,000 SF)

NOW OR FORMERLY
LANDS OF
CITY OF ST. MARYS

NOW OR FORMERLY
LANDS OF
ADMIRALS WALK
PHASE ONE



77.23 ACRE TRACT

CITY OF ST. MARYS, 29th G.M.D., CAMDEN COUNTY, GEORGIA

PREPARED FOR: TERRY STOVER

GEOMETRIC CONTROL PLAN

P&A ENGINEERING, INC.
CIVIL ENGINEERS

1201 SHADOWLAWN DRIVE ST. MARYS, GEORGIA 31558
 PH. (912) 673-8575 FAX (912) 882-2729
 29 CORAL PARK WAY BRUNSWICK, GEORGIA 31520
 PH. (912) 265-3851 FAX (912) 264-7273

NO.	REVISIONS	BY	DATE

PROJ NO. :	07-5015
DATE:	2/28/07
DRAWN BY :	JWH
CHECKED BY :	WRC
APPROVED BY :	WRC
SCALE :	1"=150'

SHEET

1

2007-5015