



# MOSSY OAK PROPERTIES

## 254.77+/- Acres in Spring Lake, Harnett County

\$1,269,562 / 254.77+/- Acres

### About This Property

The Mitchell Forest tract is located in southern Harnett County along the Harnett/Cumberland County line. This parcel is serviced by Harnett County Water, and there is a sewer on the North Eastern end of the property. Both Shady Grove Rd and Buddy Barefoot Rd dissect the property and the Little Lower River runs along the southern border for over 2 miles. Most of the timber consists of planted Loblolly. The ag fields are pumped and piped for irrigation from the river. 3 Phase power runs along the southwestern border of the property. Opportunities are endless with this sprawling property. Portions of the property are suitable for development and/or solar. Seller is willing to split the property into smaller parcels. For more information, please contact the listing agent, Nick Marinelli at 704-622-2772 or nick@landandluxury.com.



### Property Facts & Features

#### Main Structure

- No Structure

#### Other Structures

- N/A

#### Rights

- Oil / Natural Gas
- Mineral

#### Water Access

- River
- Creek / Stream

#### Fishing

- N/A

#### Wildlife

- N/A

#### Recreation

- N/A

#### Other

- Road Frontage



**Mossy Oak Properties Land and Luxury**

114 Morlake Drive Suite 103  
 Mooresville, NC 28117

**Phone:** (704) 658-1121

**Fax:** (704) 831-5301

**Link:** <http://www.mossyoakproperties.com/land/44380>



# MOSSY OAK PROPERTIES



## Mossy Oak Properties Land and Luxury

114 Morlake Drive Suite 103  
 Mooresville, NC 28117

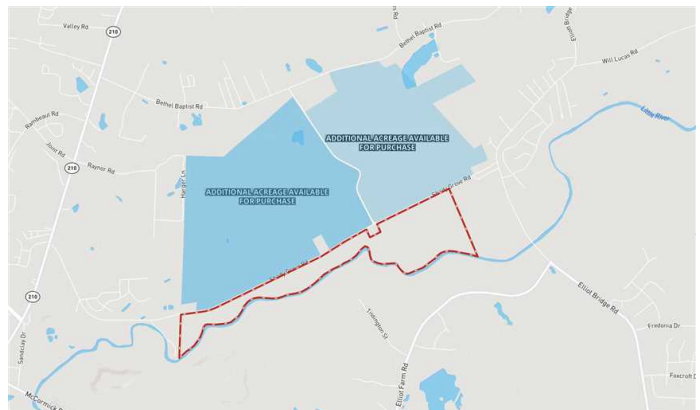
Phone: (704) 658-1121

Fax: (704) 831-5301

Link: <http://www.mossyoakproperties.com/land/44380>



# MOSSY OAK PROPERTIES



**Mossy Oak Properties Land and Luxury**

114 Morlake Drive Suite 103  
Mooresville, NC 28117

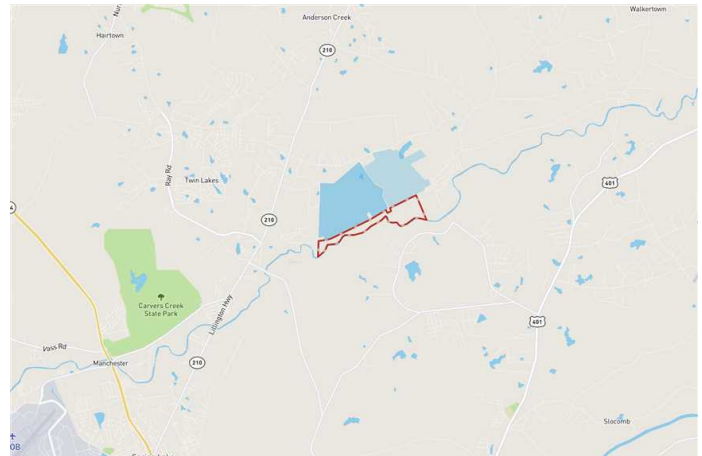
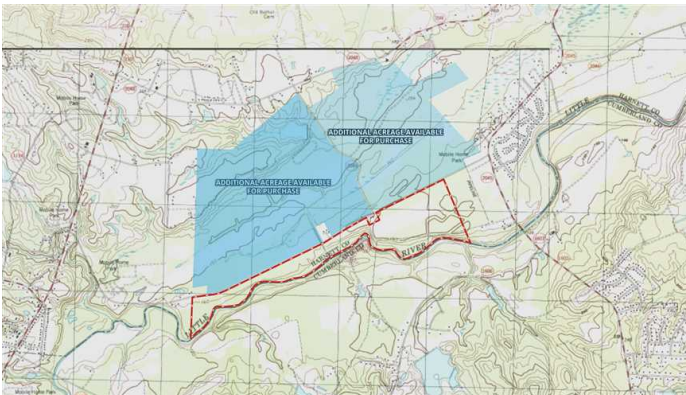
**Phone:** (704) 658-1121

**Fax:** (704) 831-5301

**Link:** <http://www.mossyoakproperties.com/land/44380>



# MOSSY OAK PROPERTIES



**Mossy Oak Properties Land and Luxury**

114 Morlake Drive Suite 103  
Mooresville, NC 28117

**Phone:** (704) 658-1121

**Fax:** (704) 831-5301

**Link:** <http://www.mossyoakproperties.com/land/44380>